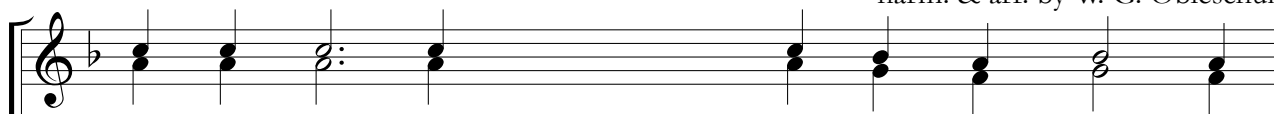


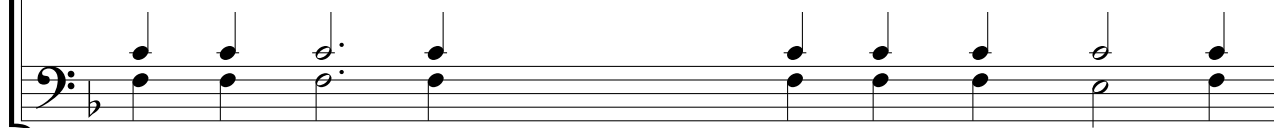
TRANSFIGURATION OF THE LORD

1st LITYA STICHERON

Tone Two

Galician "Bolhar" Melody
harm. & arr. by W. G. Obleschuk $\text{♩} = 96$ Soprano
Alto

In Your good - ness You have sanctified the whole world with

Tenor
Bass

 Musical notation for Soprano and Alto parts, second system. The Soprano part is on a treble clef staff and the Alto part is on a bass clef staff. Both parts feature a series of chords in a B-flat major key signature.

Your Light: You were trans-fig-ured up - on a high moun - tain,

 Musical notation for Soprano and Alto parts, third system. The Soprano part is on a treble clef staff and the Alto part is on a bass clef staff. Both parts feature a series of chords in a B-flat major key signature.

show - ing Your pow - er to Your Dis - ci - ples; for You re -

 Musical notation for Soprano and Alto parts, fourth system. The Soprano part is on a treble clef staff and the Alto part is on a bass clef staff. Both parts feature a series of chords in a B-flat major key signature.

deem the world from trans-gres - sion. There - fore we cry out

 Musical notation for Soprano and Alto parts, fifth system. The Soprano part is on a treble clef staff and the Alto part is on a bass clef staff. Both parts feature a series of chords in a B-flat major key signature.

to You: "O Lord of com - pas - sion, save — our souls!"

TRANSFIGURATION OF THE LORD

2nd LITYA STICHERON

Tone Two

Galician "Bolhar" Melody
harm. & arr. by W. G. Obleschuk

♩ = 96

Soprano
Alto

Tenor
Bass

You were trans - fig - ured in glory on Mount Ta - bor, O

Christ_ God, showing to Your Dis - ci - ples the glo - ry of Your

Di - vin - i - ty. Enlighten us al - so with the light of Your

knowl - edge and guide us in the path of Your com - mand - ments,

for You_ a - lone are good and the Lov - er of man!